



# This year's theme...

## 'This is my place'

This year's theme is all about knowing our place in the world. When we feel connected to the people and environment around us it helps us to feel happy, safe and ready to take on new challenges.

A feeling of belonging can come from many different places; *in our class, a team, our family or our group of friends.* We can share fun times together and help each other when we need it. We don't always feel like we belong and that's ok, this week is also about learning more about who can support you.



Meet Bertie Bean



# What does belonging mean?

- Feeling connected.
- Being part of a family, community, group or team (We all belong to this school community!).
- Having people you care about and who care about you.
- Being connected to a place (here or far away).
- Being accepted for who we are.



# Welcome game



- How do we make someone feel welcome in our school community?
- Turn to the person next to you and without using any words or sounds (gestures only) welcome them to this assembly.
- Think about your facial expression and body language!



**Bertie finds his place**





Bertie the bean felt out of place.  
The eggs didn't always want to play  
Bertie's games or sing his songs.

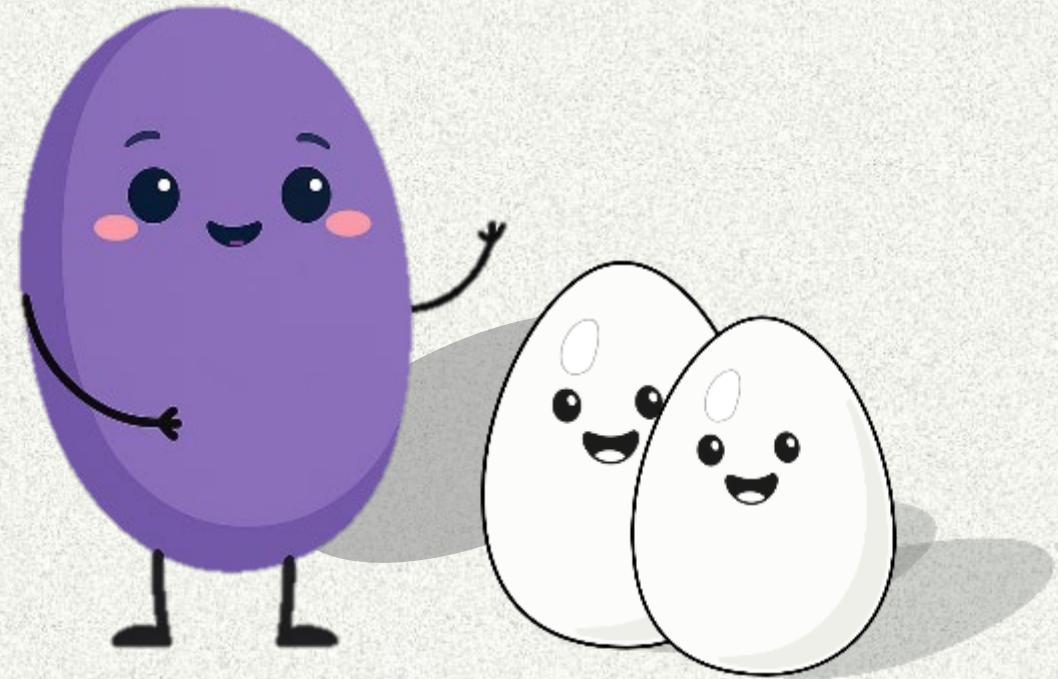
Sometimes, because of this, Bertie had  
big feelings and didn't know what to do  
with them.

Bertie decided to be brave and ask the  
eggs in their nest for some help.

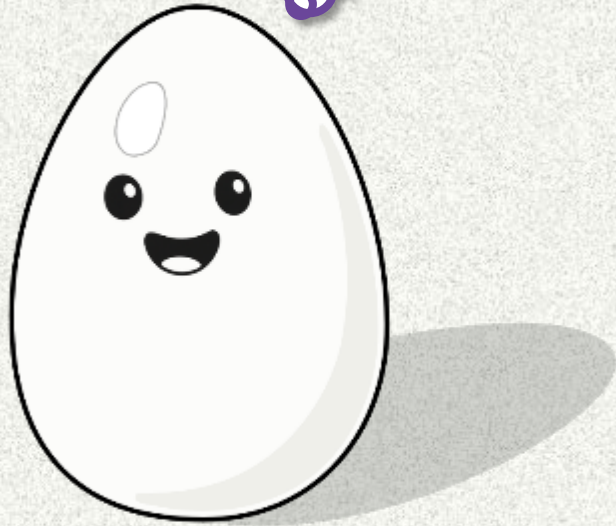


Bertie asked Greggory, "What helps you when you feel left out and alone?".

Greggory said, "Hmmm I usually speak to my Nana about it, she listens to me and helps me feel better. We play a special game together and then I feel more included".



There's only  
one me!!



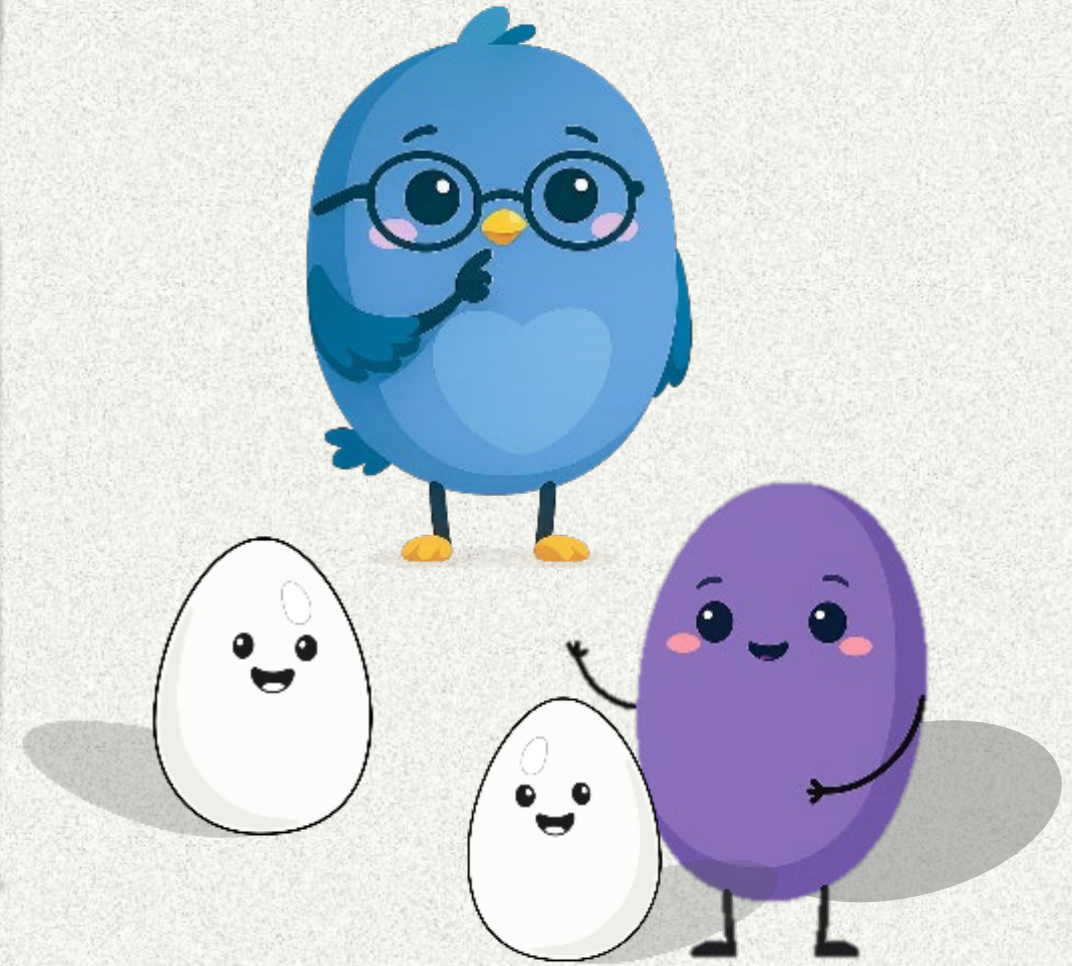
Bertie asked Meggan, "What do you do when you feel different from the other eggs?".

Meggan thought for a moment and then she said, "It's really hard to feel different, it can be so lonely. What I do is think about what makes me special and unique. It helps me to remember that everyone is different and there is only one me!"



Bertie had one more question, so they decided to ask their teacher Ms Finnegan,

"What do I do with my big feelings?."



You can always  
ask me for help  
if you need it.



Ms Finneggan smiled and said, “Our big feelings are so important! They let us know we need some help. When I have a big feeling I try really hard to take 4 deep breaths before deciding what to do. When I feel a bit calmer it's easier to know what to do next.”

“You must remember you are just a small bean Bertie and small beans need extra help with their big feelings. You can always ask me for help if you need it.”



Bertie felt so much better in the nest after hearing how the eggs managed these tricky situations.

He knew that he was special and unique and **this was his place.**



